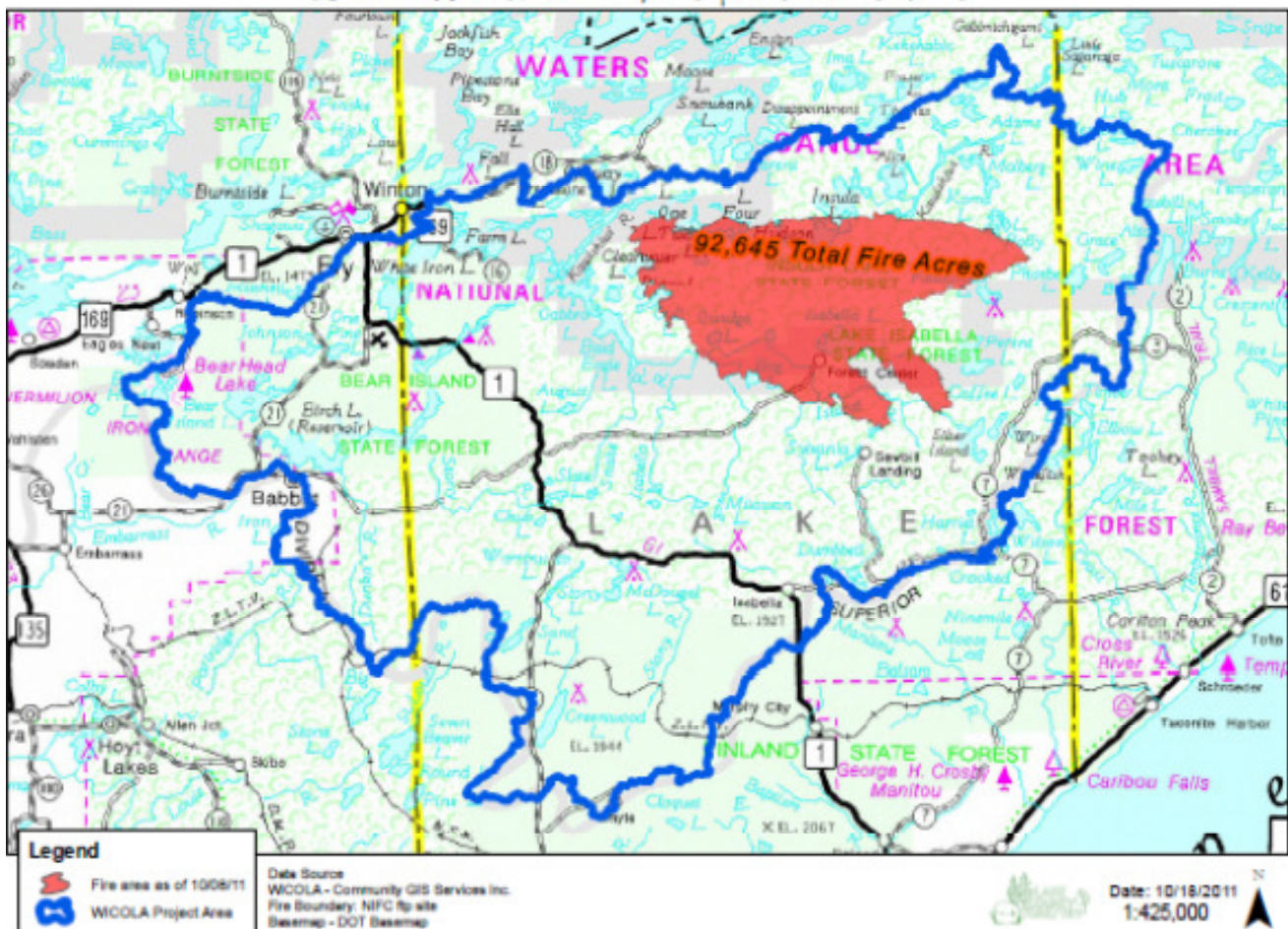


- GPS work
 - Received GIS layers from Community GIS
 - Zoning
 - Ownership
 - Campgrounds
 - Campsites
 - Pagami Creek Fire
 - Received GIS map from Lake County
 - USFS – Received GIS layers from USFS showing campsites
 - Working with John Pierce to try get a more complete inventory of campsites
 - SNF Map has many campsites that are not on GIS information
 - USFS campsites exist in SNF that are neither on GIS layers or on SNF Map
 - Eg. - Dumbbell Lake, Birch Lake
 - USFS indicated they would GPS these sites next Spring
 - These campsites are more likely to impact water quality than BWCA sites which are permitted, maintained and have visitor education requirements.

Kawishiwi River Watershed Fire Impact (as of 10/8/11)



November Accomplishments

Now that we have the data, or at least most of it, what are we going to do with it and how are we going to share it? Where are people going to expect to encounter the information? The obvious places to look for it are websites and written articles. Websites are in color and can be manipulated by the user. Written Articles like are generally black and white and what you see isn't necessarily what you wanted to show. My November seemed to be consumed by websites and articles, while many of my partners were out in the woods chasing deer around or heading to warmer



climates for a well deserved respite before becoming cabin bound. MNDOT went and surprised me and decided to close off Highway 1, my main path into the watershed and major artery to Ely. (The way highway 1 moves up and down and back and forth, it is appropriate to call it an artery.) Just when I thought I was ready to put this year's data into MPCA's intimidating program called Equis, Joel graciously gave me last year's data as well. The amount of data entry is tempered by three saviors, they are Cat, RMB and CLMP. Thanks to the work of our dedicated VCC Intern, Cat Fyre, much of the Stream and Lake data is already in spreadsheet format and can be copied and pasted once I get the sites set up in Equis. RMB Labs, in conjunction with their lab testing of 10 Lakes in the watershed has already set up these Lake sampling sites and submitted their results to Equis. Finally, Johanna, the MPCA Citizen Lake Program Manager will continue to put in the results from our established CLMP volunteers AND send the data to me so I don't have to tease it out of Equis.

- Implementation Plan
 - RFP was sent to Wenck, University of Minnesota, St. Cloud State University and Desotelle Consultants
 - Followup clarification to the RFP was sent to all proponents
 - Ranking sheet was assembled using goals criterion from the grants.
 - Proposals were received from Wenck, University of Minnesota, and Desotelle Consultants
- Newsletter
 - Crayfish data was updated for use in Newsletter
 - Progress Report was written up for inclusion in Newsletter
 - Prepared graphs of Historical Trends using data from RMB's website
- Monitoring reporting
 - CLMP Program
 - Clarified CLMP data to enter versus what is entered by MPCA

	<h1>WICOLA NEWS</h1>	White Iron Chain of Lakes Association, Inc.
		Volume XVIII Book III Autumn 2011
<p>Report from the President, Jo Kovach</p> <p>Hello, and Welcome to the White Iron Chain of Lakes Association (WICOLA) newsletter. This issue and the previous one are being sent out to all property owners in the entire Kawishiwi Watershed as a part of our watershed protection grant. We hope that the two issues provide a good overview of the Kawishiwi Watershed Protection Project (KWPP). WICOLA members will be receiving only the current issue, by email.</p>	<p>Kawishiwi Watershed Protection Project</p> <p>THE KAWISHIWI WATERSHED Picture the tumbling waters of Kawishiwi Falls or quiet bays where the only sound is a loon's lonesome yodel. Smell the watery freshness as your boat slides into a clean blue lake. This is the Kawishiwi Watershed, gateway to the Boundary Waters and headwaters of the Rainy River. This international treasure</p>	<p>INSIDE THIS ISSUE</p> <p>2 KWWP Autumn Update 4 Coring in our Lakes 5 Member Profile: Jim Finckney 6 Map: Kawishiwi Watershed and Paganini Creek Fire 7 Crayfish Survey</p>

- CLMP Program to send out invitation to volunteers in the watershed to invite them to contact me for additional monitoring parameters
- MPCA to send CLMP data to KWWP filtered by Hydrologic Unit.
- Missing data
 - Sand Lake
 - Stony Lake
 - Lake Gegoka
 - McDougal Lake
- Beneficial Uses Survey
 - Created listing of all beneficial uses from Mn State Code
 - Only 30 Lakes and 29 Streams specifically designated
 - BWCA Lakes are Outstanding Resource Value, Blanket 2Bd coverage (Drinking Quality Standard)
 - Remainder of Lakes are default protection level 2B
- SSTS Inventory
 - Met with St. Louis County
 - 5 County Employees
 - 2 Wenck Employees
 - County has some concerns regarding data privacy
 - May have to pull data and give to volunteers
 - Will review spreadsheet from Wenck to eliminate areas served by municipal sewers
- GIS Information
 - Shared existing layers with MPCA
 - Limitations of ArcGIS Explorer make data some layer types unreadable
 - Free License (Small Admin Charge) available to 501c3 Organizations
 - Budget for CMP Coordination is limited
 - Meeting set up with USFS to look at inventory of USFS Campsites, Boat Landings, etc.
- Patagonia Grant
 - Received Check for \$7000 after Thanksgiving.
 - Reduces CWP hard cash requirements to \$3,324



Plans for December/January

- Grant Administration
 - Sort out volunteer time by skill levels
 - Itemize Material Contributions
 - Start on December Progress Report
- Determine changes to monitoring plan for 2012
 - Meet with MPCA, USFS
- GIS
 - Target places of interest in Watershed
 - Talk to VCC about Intern/class project
 - Meet with USFS regarding SNF Campsite Inventory
 - Talk to residents who are familiar with social campsites / landings
 - Outward Bound - Bert Hyde
 - River Pointe - Steve Koschak
 - Others?
- Equis
 - Establish new sites for CSMP Sites
 - Submit CSMP data to Equis via Joel
 - Submit Lake Profiles from 2011 Monitoring to Equis via Joel
 - Find a volunteer to digitize 2010 Monitoring Data
 - Submit Lake Profiles from 2010 Monitoring to Equis via Joel

