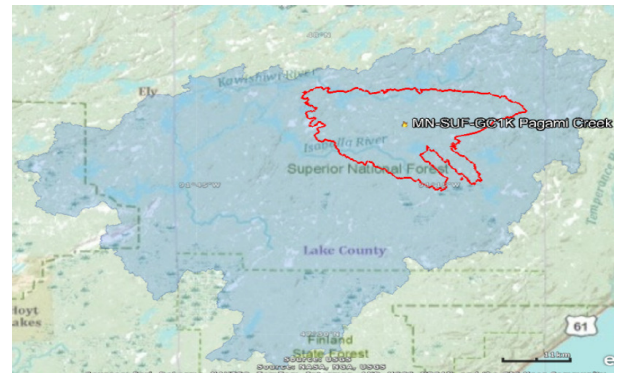
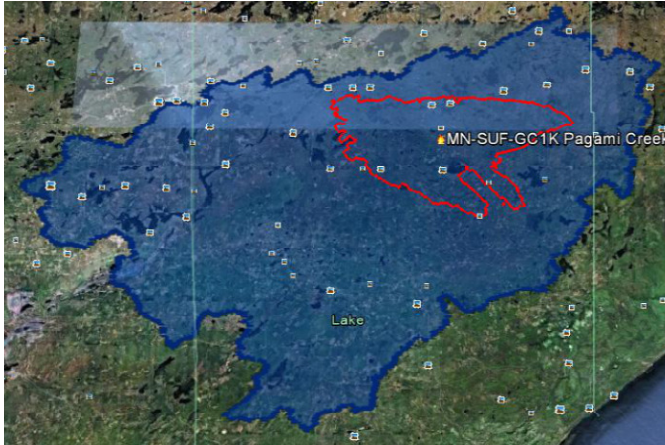


September Accomplishments



2 GoogleEarth and GIS Pictures of Pagami Creek Fire OverKawishiwi Watershed

Although it started the previous month, the biggest event in the watershed in September 2011 was the Pagami Creek Fire. It forced a large number of people to change their plans. Johnnie and Bert were working the fire at the beginning of the month helping to extract campers from the closed area and were unable to take samples in the BWCA at the beginning of September. We set our plans for sampling Gabbro and Isabella until later in the month when they would be able to assist us. I hadn't realized the severity of the fire until Jo complained about the toll that the smoke was taking on her during the Oversight Committee Meeting.

Anticipating the change in priority from Crayfish Survey to Fire control, I contacted the USFS about continuing the Crayfish work on their behalf. I was able to catch Brent from the USFS in the office due to the mandatory change out of fire personnel and arranged to pick up the crayfish traps along with 40 pounds of frozen suckers. When I received this equipment, I was impressed by the amount of Fire crew activity behind the calm front of the Kawishiwi Ranger District Headquarters. I pulled up to the fisheries Garage and phoned Brent rather than get mixed up in the traffic scurrying about. After loading the traps, we went inside to look at the Lakes and streams yet to be surveyed; Isabella, Kawishiwi, Silver Island, Dumbbell, Harriet, and Greenwood Lakes, Little Isabella, Snake and Island Rivers. We also set up a few more locations along the South Kawishiwi to see how fast upstream the crayfish were moving. All of these sites were outside the fire closure area. On the way back to my car, I ran into an old USFS friend. He was part of the replacement crews that were taking the second shift on the Pagami Fire. He had finally gotten his orders. He left in a truck heading to the Fire, but hadn't made it out of the parking lot before I left because he stopped to get more information from someone coming in. Later that afternoon, I was amazed by the smoke plume rising in the East as I drove across the Tomahawk Trail from Babbitt. I was mildly surprised to see a helicopter staged by near the Stony River, but received an explanation when I heard a chainsaw and saw flames just downstream from the bridge. Before I had finished sampling the Stony River, 5 more vehicles had arrived to suppress the flames. With the Pagami going wild, it was clear that the USFS didn't want to battle another fire West of Highway 1.

I arranged volunteers to help with the Crayfish Survey on the South Kawishiwi and set out with plans to trap the Lakes near Isabella. I didn't get past Greenwood Lake before I learned that all the Lakes North of Highway 1 were closed due to the Fire. The next day I had to postpone my Volunteers for the South Kawishiwi due to additional BWCA Closures. Progress on control of the Fire allowed me to survey for in Dumbbell and Harriet Lakes at the

end of the month. The same progress allowed me to sample most of the Stream sampling locations along the Tomahawk Road one last time before the end of the sampling season.

September was also complicated by the absence of our MPCA Project Manager. This was even harder to deal with than the State shutdown in July and the Quetico Trip in August because it was completely unexpected and unknown. Once we got word from the MPCA, we were able to work through the situation and find surrogates for calibrating equipment, answering monitoring questions and even getting approval of the CWP Work Plan. All in all, I believe it was a good experience for the Project, but we are happy to have Joel back.

Meetings

- Twin Metals – Discussed project with Dennis Schubbe of Twin Metals
 - Coordination of monitoring between Twin Metals, USFS and WICOLA
 - Twin Metals looking at heavy metals
 - WICOLA focused on Nutrients
 - USFS to begin to testing regime (grab samples from Streams near Spruce Road and Partridge River)
- Lake County Commissioners
 - Discussed progress of project
 - Budget for CWP Portion of Project being amended
 - Reduction in cost of Paleo Work reduced need for Project Cash
 - Increase in volunteer time for AIS and Water monitoring allows WICOLA to match Cash from MPCA and reduce cash requirements from WICOLA and other Grant Sources.
 - Revised budget submitted to MPCA
 - Budget revisions approved by MPCA (9/27/2011)
 - GIS and Septic Contracts underway
 - Paleo Contract was rewritten by County Attorney and ready for consideration
 - Contract executed at subsequent Board Meeting
- Septic System Inventory (Wenck and Associates)
 - Met with Community GIS to determine database deficiencies
 - Fire Numbers not in information from County
 - Subsequently received data from Jack Renick (LC Tax Assessor)
 - Spreadsheet cleaned up by Community GIS
 - Wenck added columns for County Record Research
 - Mailing Addresses of Tax Statements not on Database
 - Subsequently received data from Jack Renick (LC Tax Assessor)
 - Met with Matt Huddleston and LC Zoning Staff
 - WICOLA volunteers to have open access to LC Records and use of Office
 - Limited assistance from Lake County Zoning Staff during research
 - Char and Teresa volunteered to spend time at Lake County conducting Research

VCC Interns

- Contacted VCC regarding interns
 - No positions for school year.
 - Good possibility to get two interns for Summer 2012



3 A Full Crayfish Trap from Dumbbell Lake

AIS – Crayfish Survey was extended to Greenwood, Harriet and Dumbbell Lakes.

- Greenwood and Harriet Lakes - Native Crayfish were abundant at some locations
- Dumbbell Lake – **166 Rusty Crayfish** were found in 6 sites (same sites yielded 2 Rusties in 2005)
- South Kawishiwi surveys postponed

GIS (Community GIS)

- Provided Map of Watershed with terrain, major roads, subwatersheds
- Provided Spreadsheet for SSTS Inventory and Newsletter Mailing
- Provided advise on working with GIS information
 - Arc GIS – Free software that can view GIS data provided by MNDNR, Community GIS, USFS, etc.
 - GIS Viewer only
 - Does not allow extraction of data lists or altering information
 - Google Earth – alternate format to review GIS Data
 - *.mdb GIS files can be opened with Excel to view all GIS data in spreadsheet format.
- Provided Google Earth boundary of Watershed to compare USFS fire perimeter to Watershed Boundary
- Sally Schultz - conducted 4 campsite surveys and two landing surveys on Bearhead Lake

Paleo-Limnology Contract (NRRI)

- Contract approved by Lake County Commissioners
- Took 85 CM Core from White Iron Lake 9/27
- Planned to Drill Fall Lake 9/28

SCSU

- Talked to Matt Julius – Suggested monitoring for Fecals near Impromptu Campsites in White Iron Lake



4 Fall Lake Monitoring - Butch, Dave, Ken and Derrick

Monitoring

- Conducted Final Monitoring of CLMP+ Lakes Except Little Gabbro and Isabella
 - Talking to MPCA and USFS about taking samples from Gabbro and Isabella when entry restrictions are lifted.
- Conducted Final Monitoring of all streams
 - Included streams normally monitored by others
 - Took photos and GPS Points of stream monitoring locations
 - Three streams inaccessible
 - Island River and Isabella Rivers closed due to Pagami Creek Fire
 - Keeley Creek inaccessible due to Road Construction

October/November Goals

- Gather SSTS data from Lake and St. Louis Counties
- Determine value of testing Isabella and Little Gabbro Lakes
- Collect monitoring data
 - Conduct preliminary analysis of results
 - Determine changes to monitoring plan for 2012
 - Results from 2011
 - Impacts from Pagami Fire
- Complete Crayfish Survey on South Kawishiwi River in BWCA
- Assist NRRRI with completion of coring
- Send out RFP for Implementation Plan
 - SCSU
 - Wenck
 - UM
 - Desotelle Consultants
- Get GPS workplan moving forward
- Sort out volunteer time by skill levels
- Itemize Material Contributions
- Take some time off (in Colorado and Wyoming)



5 Custer State Park